

BRADY HH8x

BRADY HH83 / BRADY HH85

USER GUIDE



Table of contents

| | | |
|--------|---|----|
| 1. | GETTING STARTED | 4 |
| 1.1. | GENERAL | 4 |
| 1.2. | INBOX CONTENT. | 5 |
| 1.3. | REMOVING AND INSTALLING THE BATTERY | 5 |
| 1.3.1. | BATTERY “HOT SWAP” | 6 |
| 1.4. | CHARGING | 7 |
| 1.4.1. | Brady HH83/HH85 CHARGING | 7 |
| 1.5. | FEATURES OVERVIEW | 8 |
| 2. | USING THE DEVICE. | 10 |
| 2.1. | BUTTONS | 10 |
| 2.1.1. | SCAN BUTTONS | 10 |
| 2.1.2. | POWER KEYS | 10 |
| 2.1.3. | HOME KEY | 10 |
| 2.1.4. | BACK KEY | 10 |
| 2.1.5. | APPS TASK MANAGER KEY | 10 |
| 2.2. | STATUS LED | 10 |
| 2.3. | SENSORS | 11 |
| 2.3.1. | TOF SENSOR. | 11 |
| 2.3.2. | LIGHT AND PROXIMITY SENSOR | 11 |
| 2.3.3. | NFC READER. | 11 |
| 2.4. | VOLUME | 11 |
| 2.5. | SCANNING DIRECTIONS. | 12 |
| 2.6. | Brady HH83/HH85 RFID ACD VARIANTS. | 14 |
| 2.7. | 2D IMAGER | 15 |
| 2.7.1. | USING CONFIGURATION BARCODES. | 15 |
| 2.7.2. | CONFIGURING VIA NUR ACCESSORY EXTENSION API | 16 |
| 3. | RF PROFILES. | 17 |
| 4. | SOFTWARE | 18 |
| 4.1. | Brady APPLICATIONS | 18 |
| 4.1.1. | Brady APP CENTER. | 19 |
| 4.2. | INSTALLING 3RD PARTY APPLICATIONS | 20 |
| 4.3. | LOCKING THE USER INTERFACE | 21 |
| 4.3.1. | CREATE THE DESIRED USER INTERFACE | 21 |
| 4.3.2. | HOW TO LOCK/UNLOCK UI | 22 |
| 4.4. | UPDATE INSTRUCTIONS. | 23 |
| 4.5. | BACKUP AND RESTORE CONFIGURATION | 24 |
| 4.5.1. | CREATE BACKUP | 24 |
| 4.5.2. | MANUALLY RESTORE BACKUP | 24 |
| 4.5.3. | AUTOMATICALLY RESTORE BACKUP WITH USB DRIVE | 25 |
| 4.5.4. | AUTOMATICALLY RESTORE BACKUP WITHOUT USB DRIVE. | 25 |
| 4.5.5. | SOFTWARE TRIGGERED RESTORE BACKUP. | 25 |
| 4.6. | FACTORY RESET. | 25 |

| | | |
|--------|---|-----|
| 4.6.1. | USING ANDROID MENU | .25 |
| 4.6.2. | WITHOUT USING THE TOUCH SCREEN | .25 |
| 4.7. | ENTERPRISE MOBILITY MANAGEMENT (EMM) | .26 |
| 4.8. | APPLICATION DEVELOPMENT | .27 |
| 4.8.1. | NUR API IN GENERAL | .27 |
| 4.8.2. | APPLICATION DEVELOPMENT | .27 |
| 5. | REGIONAL SETTINGS | .28 |
| 6. | COMPLIANCE STATEMENTS. | .28 |
| 6.1. | CE | .28 |
| 6.2. | FCC/IC. | .28 |
| 6.3. | RF EXPOSURE. | .29 |
| 7. | SERVICE AND SUPPORT | .29 |
| 8. | BRADY WARRANTY | .29 |
| 9. | RELATED DOCUMENTS AND CONTENT. | .30 |
| 10. | VERSION HISTORY | .30 |
| 12. | APPENDICES. | .31 |
| 12.1. | APPENDIX 1 SAMPLE 2D IMAGER CONFIGURATION BARCODES. | .31 |

1. GETTING STARTED

1.1. GENERAL

Brady HH8x family is designed for quick, accurate and reliable data collection whether it is for barcode or UHF RFID reading. Featuring the Android operating system and a 4.7" HD touchscreen with high processing power. This enables sophisticated software development offering a superb user experience. The Gorilla Glass 3 touchscreen provides excellent display quality and robustness.

What makes Brady HH83/HH85 RFID ACD so powerful is the Brady NUR2-1W module which provides state-of-the-art UHF RFID reading performance is an ideal contemporary data collection tool.

The modular design of Brady HH83 enables the only Barcode variant to be upgraded* to RFID+Barcode variant in future, instead of replacing the device.

* Upgrade must be made by authorized service centers. Upgrade ordering codes are ACN00199/200.



Brady HH83 RFID ACD (left) and Brady HH83 Barcode (right) variants

1.2. INBOX CONTENT

Brady HH83/HH85 inbox contains following items

- Brady HH83/HH85 device
- Changeable battery (pre-installed inside the unit).
 - 3350mAh battery included in Brady HH83 Barcode variants
 - 6700mAh battery included in Brady HH83 RFID ACD variants
 - 10050mAh battery with pistol grip included in Brady HH85 RFID ACD variants
- Wrist strap
- Safety and regulations card

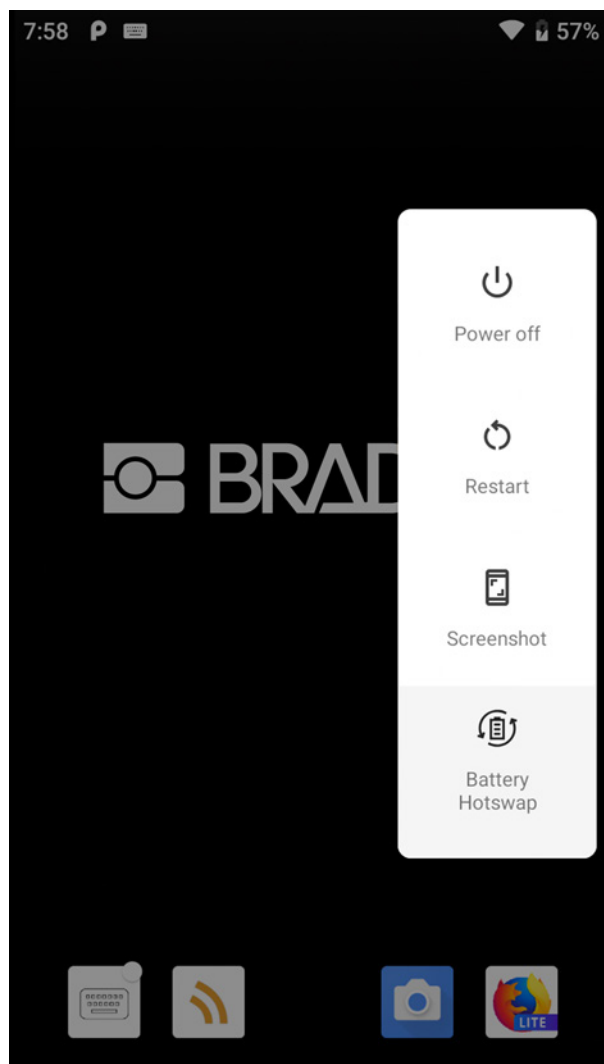
1.3 REMOVING AND INSTALLING THE BATTERY



1.3.1. BATTERY “HOT SWAP”

The Brady HH83/HH85 provides a battery “hot swap” functionality which the user can activate from the Android “power off” menu (displayed when Power button is pressed during 1 second). This feature allows removing a (discharged) battery and installing a fully charged one in a matter of seconds, thus allowing a larger usage time of the device when having extra batteries for replacement.

When selecting “Battery Hotswap”, the device will go to sleep mode and, after waiting for a short vibration, then the user can swap the battery without losing any data, as the device will not reboot or power off as it would do without “hot swap” support.



1.4. CHARGING

1.4.1. Brady HH83/HH85 CHARGING

NOTE! Due to regulations, devices are delivered with empty battery.
Please fully charge your device before first use.

The Brady HH83/HH85 can be charged via desktop or USB-C charger. The USB charger needs to have a USB-C connector and preferably support for Quick Charge 3.0.

Charging time from 0 – 100% via the desktop and Quick Charge 3.0 USB charger is about 4 hours for both Brady HH83 Barcode and RFID ACD variants.

Due to its larger battery, charging time from 0 – 80% is about 4 hours for Brady HH85 RFID ACD, and 6 hours to 100%.

The status LED on the unit shows the charging progress:

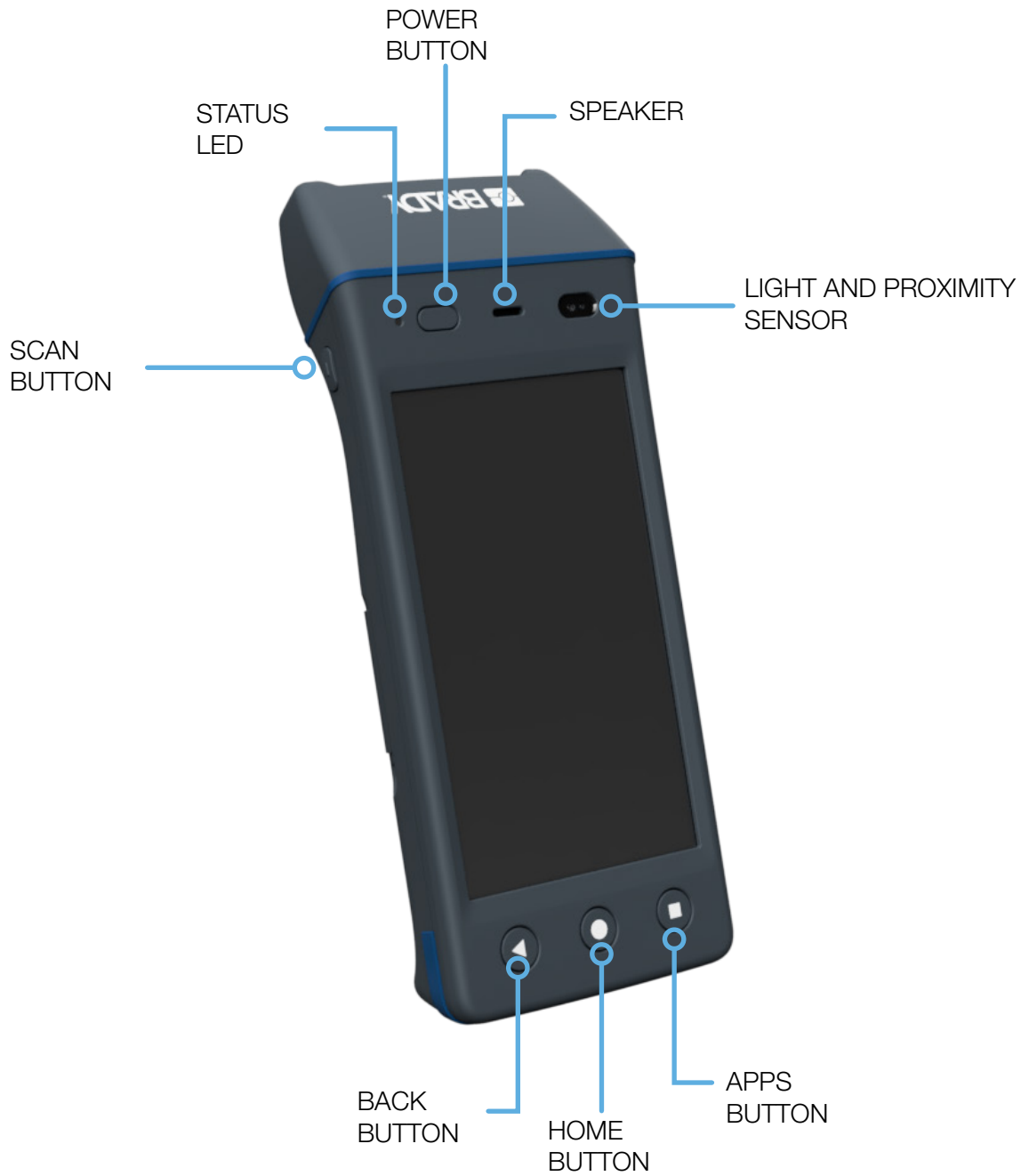
- red when battery level is below 15%
- yellow when it's between 15% and 90%
- green when it's above 90%



Charging of the Brady HH83 via USB charger

NOTE! The USB-C and desktop chargers are sold separately

1.5. FEATURES OVERVIEW



(1) Brady HH83 keys and user interface (front side)

The three buttons below the screen map the typical on-screen Android buttons.



(2) Features of Brady HH83 (back)

The variant shown in front and back image is the Brady HH83 Barcode. Keys and user interactions are the same for Brady HH83 RFID ACD and Brady HH85 RFID ACD, except:

- Brady HH83 RFID ACD and Brady HH85 RFID ACD do not have built-in ToF sensor.
- Module containing the barcode scanner also builds the RFID UHF reader and antenna.

The Brady HH85 RFID ACD also includes a scan button on the pistol grip:



Brady HH85 RFID ACD

2. USING THE DEVICE

2.1. BUTTONS

The Brady HH83/HH85 devices include six physical keys for user interactions. Location of the keys can be seen in image (1).

Both Brady HH83 Barcode and RFID ACD variants include two side keys for triggering UHF RFID and/or barcode reading, allowing usage with both right and left hands.

The Brady HH85 RFID ACD also includes a trigger on the pistol grip, besides of the two side keys.

2.1.1. SCAN BUTTONS

The trigger (SCAN) buttons are in Brady HH83 on both sides of the device, and also on the pistol grip in the Brady HH85. Depending on the application in use, the trigger button starts/stops UHF RFID or barcode reading. By default, the first press of the button starts the reading and the second press of the button stops it.

NOTE! By default, side buttons in Brady HH8x don't wake up the reader if sleeping.


The scan buttons information (status) is also available for 3rd party applications via the Android API, as a push or release event, so that their behavior can be customized.

2.1.2. POWER KEYS


Power key turns the device On/Off. The power key can be used also to wake the device up if it's sleeping and displaying the "Power off" menu if the key is pressed continuously for 1 second.

When pressing the power key continuously for 8 seconds, the device will reboot immediately.

2.1.3. HOME KEY

 Home key will show the menu of Android OS and/or application if supported by the view/application or move back to the home screen from any application.

2.1.4. BACK KEY




 Back key equals to tapping a "Return" or "Previous" button in any application. It behaves as the "back" Android button.

2.1.5. APPS TASK MANAGER KEY

 Apps key will show the task manager of Android OS. It behaves as the "apps" Android button.

2.2. STATUS LED

Whilst the Brady HH83/HH85 is being charged, using either the USB-C charger or the Brady HH83 desktop charger, the status LED indicates the charging progress, i.e. battery level, of the device:

-  red when battery level is below 15%
-  yellow when it's between 15% and 90%
-  green when it's above 90%

2.3. SENSORS

The Brady HH83/HH85 includes several sensors which can be seen in image (1) and (2)

2.3.1. TOF SENSOR

The ToF sensor is located on the top front side of the Brady HH83 Barcode device, by the barcode scanner. It is used to trigger barcode scanning instead of using the Scan button. ToF mode is disabled by default. When enabled, the ToF sensor sends an artificial light signal. Barcode scanning is automatically performed while any item interrupts this signal, e.g., an object finger is placed in front of the sensor at a given (customizable) distance.

2.3.2. LIGHT AND PROXIMITY SENSOR

The light and sensors are located on the front side of the device, by the ear speaker.

The light sensor is used to adjust the brightness of the screen according to the ambient light (if the display brightness level is set to adaptive).

The proximity sensor detects when you have the phone up to your ear, so that touchscreen is switched off to prevent accidental tapping.

2.3.3. NFC READER

An NFC reader is located on the back side of the Brady HH83/HH85. NFC antenna is indicated with a ((waves)) icon in the Brady HH83 (there is no icon on the Brady HH85).

Multiple NFC standards are supported, proximity and vicinity, which makes Brady HH83/HH85 also compliant with existing NFC Android apps.


The Brady RFID Demo app can also be used to read NFC tags and get basic information.



Position of NFC antenna in Brady HH83 and Brady HH85

2.4. VOLUME

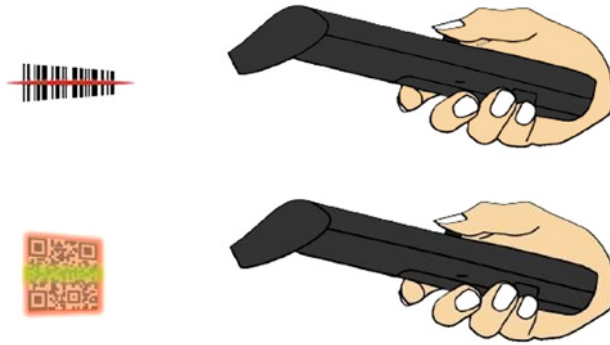
The Brady HH83/HH85 has a speaker and an earpiece, which volume can be adjusted as typically done in Android devices.

 The Brady HH83/HH85 does not have physical volume control buttons. To change the volume of the audio, you can use the shortcut at the dropdown notification menu

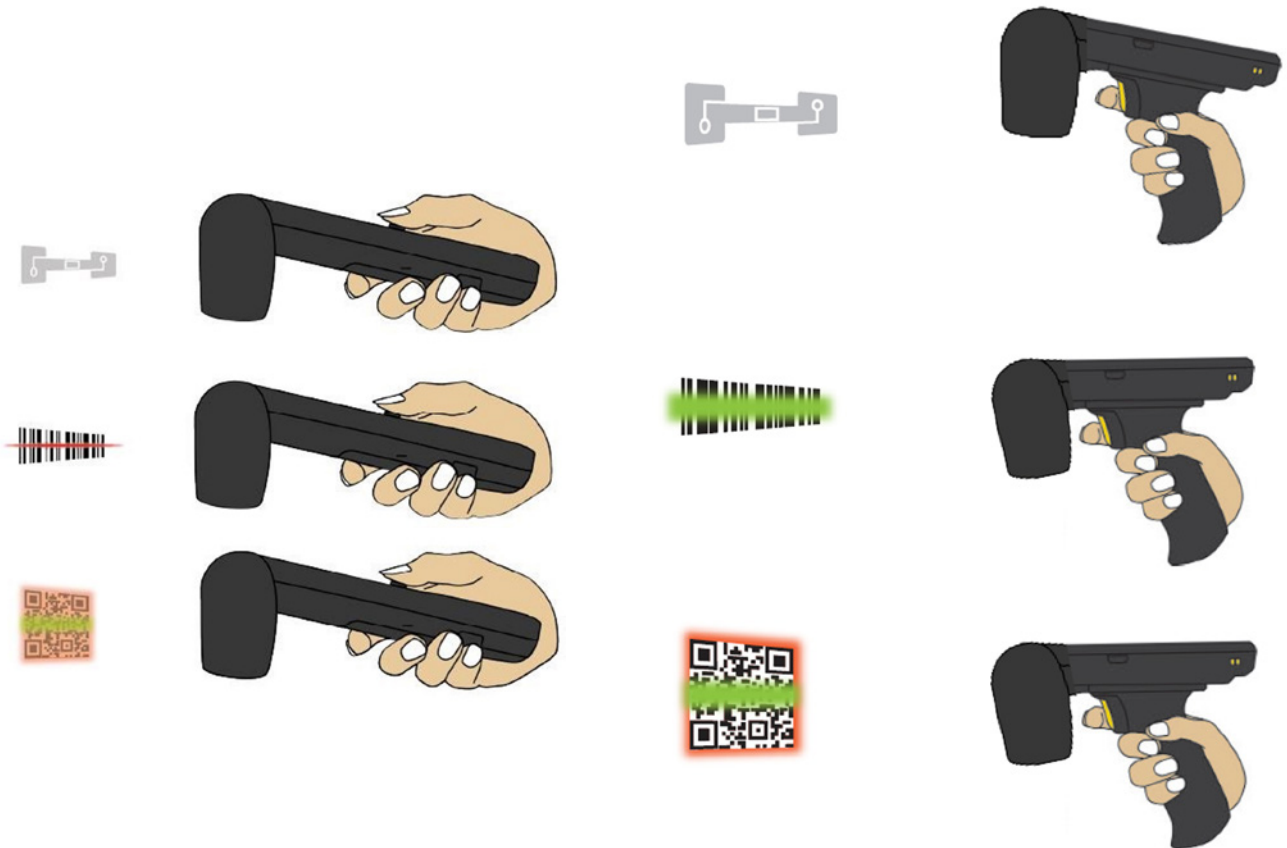


2.5. SCANNING DIRECTIONS

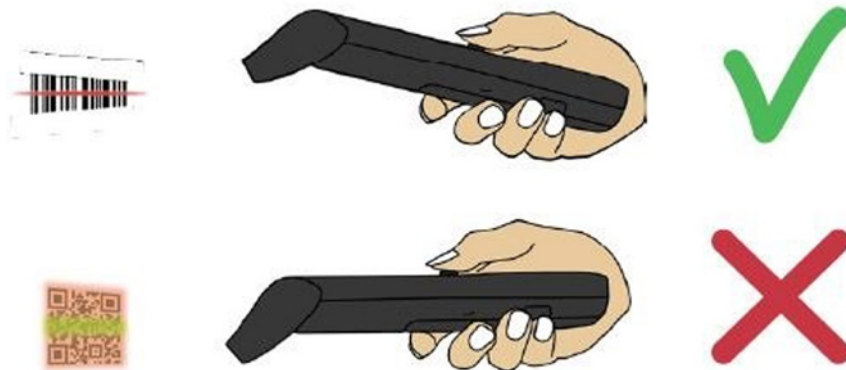
To get maximum reading performance, Brady HH83/HH85 reader must be held by following these illustrations showing the ergonomic and easy way to hold and use the device:



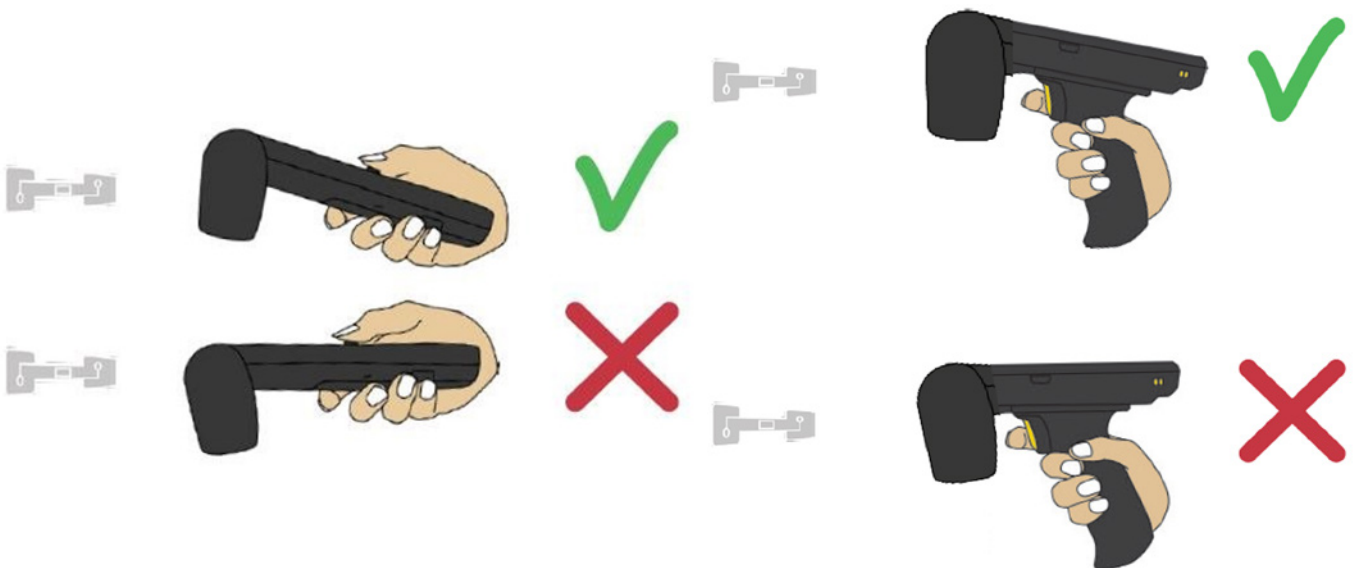
Scanning direction with Brady HH83 Barcode



Scanning direction with Brady HH83 RFID ACD and Brady HH85 RFID ACD



Correct grip of Brady HH83 Barcode



Correct grip of Brady HH83 RFID ACD and Brady HH85 RFID ACD

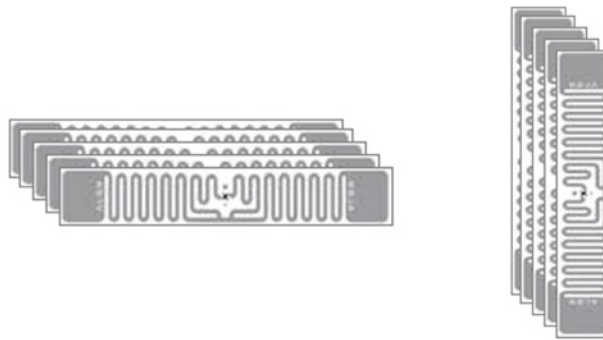
2.6. Brady HH83/HH85 RFID ACD VARIANTS

Brady HH83 RFID ACD and Brady HH85 RFID ACD include Advanced Cross Dipole antenna that includes SW controllable (via NUR API) antenna polarizations (vertical and/or horizontal), enabling a nominal reading distance about 15 m / 50 ft.

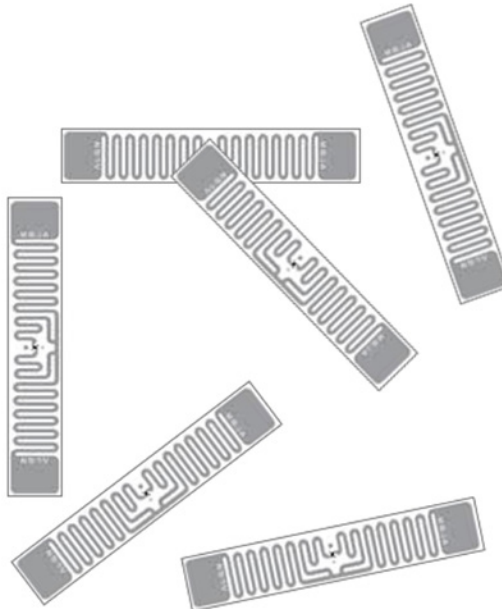
NOTE! The reading range depends on used tag and environment.

The linear antenna modes (only one antenna is enabled) are intended for long range reading when tag density is high, and tags are in horizontal or vertical position.

Enabling both linear antennas provides a lower reading speed but it does provide the best reading performance when tags are in random positions.



RFID tags in horizontal and vertical alignment



RFID tags in random alignment

2.7. 2D IMAGER

This section describes methods for configuring 2D imager of Brady HH83/HH85. The 2D imager module in use is Opticon MDI-4100 2D scan engine.

There are three different ways to configure the 2D imager that are

1. Using configuration barcode
2. Configuring via NUR Accessory extension API

2.7.1. USING CONFIGURATION BARCODES

The easiest way to configure 2D imager is to read a configuration code with the 2D imager. Please use Opticon's online configuration tools to create a configuration barcode and print it onto paper. Then scan the code with the 2D imager of Brady HH83 and new settings will be set and saved automatically.

Quick Instructions to generate imager configuration barcodes:

1. Opticon's online configuration tools: <http://opticonfigure.opticon.com/>
2. Select "Browse" in the left corner of the page
3. Select "Code options"
4. Select "Settings of readable codes"
5. Select "Enabling of readable codes"
6. Select a barcode from the list e.g. Code 39
7. Press "Add" button at the bottom
8. From right corner of the page, select "Barcode Type": e.g. PDF417
9. You can adjust the size of the code from the "Barcode Size"
10. Select "Advanced" from the lower part of the right column
11. The "2D code" field indicates the corresponding configuration string.

Find example configuration barcodes below. More configuration barcodes can be found in APPENDIX 1.

1 - Enable 1D codes: Tri-Optic, Industrial 2 of 5, Code 39 and S-Code



@MENU_OPTO@ZZ@JZ@R7@B2@R9@ZZ@OTPO_UNEM@

2 - Disable 1D codes: Tri-Optic, Industrial 2 of 5, Code 39 and S-Code



@MENU_OPTO@ZZ@DDJ@X4K@VB@DDK@ZZ@OTPO_UNEM@

2.7.2. CONFIGURING VIA NUR ACCESSORY EXTENSION API

NUR Accessory Extension API provides command for sending configuration string to the 2D imager:

```
byte [] imagerCmd (String cmd, int type);
```

cmd: Configuration string.

type: Type of imager in use (0= Opticon MDI-4100 2D scan engine)

Return value is byte array of response depending on command code(s) sent to the 2D imager. Null if command string is not valid. The first byte of array contains ACK (0x6 success) or NAK (0x15 fail).

Example:

```
//Send Enable Tri-Optic and Enable Code39 commands
byte [] rsp = imagerCmd ("@MENU_OPTO@ZZ@JZ@B2@ZZ@OPTO_UNEM@, 0);

if(rsp[0] == null
{
    //Not valid command
}
else if(rsp[0] == 0x6) //ACK
{
    //Config success!
}
else if(rsp[0] == 0x15) //NAK
{
    //Config failed!
}
```

After sending configuration to the 2D imager, settings are ready to use but next power down causes settings to lost. Therefore, it's important to save settings to non-volatile memory of imager.

```
//SAVE CONFIGURATION TO IMAGER MEMORY
imagerCmd ("@MENU_OPTO@ZZ@Z2@ZZ@OTPO_UNEM@", 0);
```


3. RF PROFILES

The Brady HH83 RFID ACD and Brady HH85 RFID ACD include the Brady NUR2-1W UHF RFID module which supports three different kind of RF profiles. The profiles are Robust, Nominal and High speed. It is important to select the correct RF profile based on use case and environment. More detailed description about the RF profiles can be found below:

- **Robust**

- o Robust RF profile is intended to be used in challenging environments. It provides the best filtering against the interfering signals coming from nearby reader(s), other signal sources and from reflective environment. This profile uses link frequency of 250 kHz and Miller 4 coding scheme providing read rates up to 200 tags/s. Due to the low data speed and best filtering the Robust RF profile provides the best sensitivity.

- **Nominal**

- o Nominal RF-profile is the default setting of readers containing Brady NUR2-1W UHF RFID module. It uses link frequency of 300 kHz and Miller 2 coding providing read rates up to 350 tags/s.

- **High speed**

- o High speed RF profile is intended to be used in use cases where the highest read rates are required. It uses link frequency of 400 kHz and FM0 coding and provides read rates up to 1000 tags/s. Due to the high data speed this profile is quite sensitive to interferences.

NOTE! Read rates will depend from the environment, reader settings, tag population and tag.

4. SOFTWARE

Brady has taken an open source SW development approach in use with the Brady HH83/HH85. Brady provides the SDK along with the examples through the GitHub. The Brady HH83/HH85 supports powerful NUR API so developers can use familiar NUR API for application development.

Some pre-installed applications are delivered together with Brady HH83/HH85 to quickly start evaluating and using the device. It also allows installation of 3rd party applications for unlimited use cases.

4.1. Brady APPLICATIONS

Brady provides following feature rich yet easy-to-use applications for Brady HH83/HH85.

The applications are pre-installed on Brady HH83/HH85 and shortcuts added to home screen by default.



4.1.1. Brady APP CENTER



The Brady HH83/HH85 is an Android device designed for professional use. GMS (Google Mobile Services) are not part of Brady Android OS, promoting greater privacy and security of personal information by preventing location tracking and data collection.

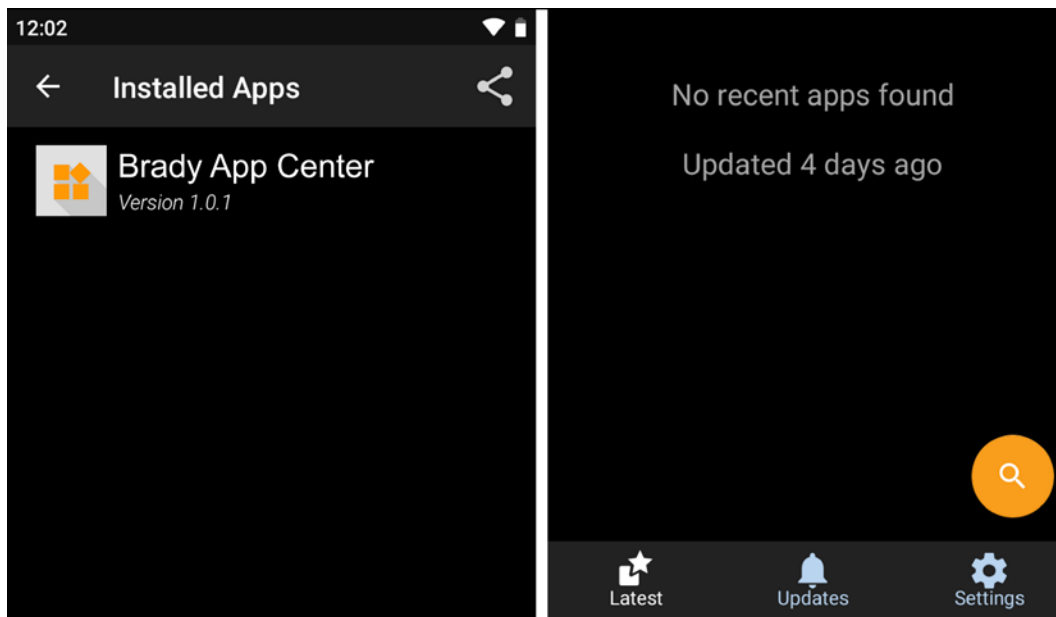
As Google Play Store is not available in Brady HH83/HH85 to prevent installation of unauthorized 3rd party applications, Brady delivers the Brady HH83/HH85 with a customized app catalogue: Brady App Center, based on the open-source Android app repository F-Droid.

Brady App Center enables the installation of 3rd party apps included in the selected repositories and keeps them updated. By default, the catalogue of apps in Brady App Center include two repositories:

- Brady repository, which includes the essential apps for Brady HH83/HH85 devices.
- F-Droid repository, a wide catalogue of Open-Source Software including web browsers, pdf readers, maps and navigation, etc. All of them being secure apps without malware or virus.

With Brady App Center, the user has full control of the available repositories and can add new ones to extend the number of available apps. Each repository can contain certain apps, that will be the available apps on the device for being installed by the user later on.

Advanced users can also create their own app repository (<https://f-droid.org/en/tutorials/create-repo/>) and upload their own Android apps, to grant the users with easy access to them, as this configuration can be exported and restored on any other device (see section 4.5).



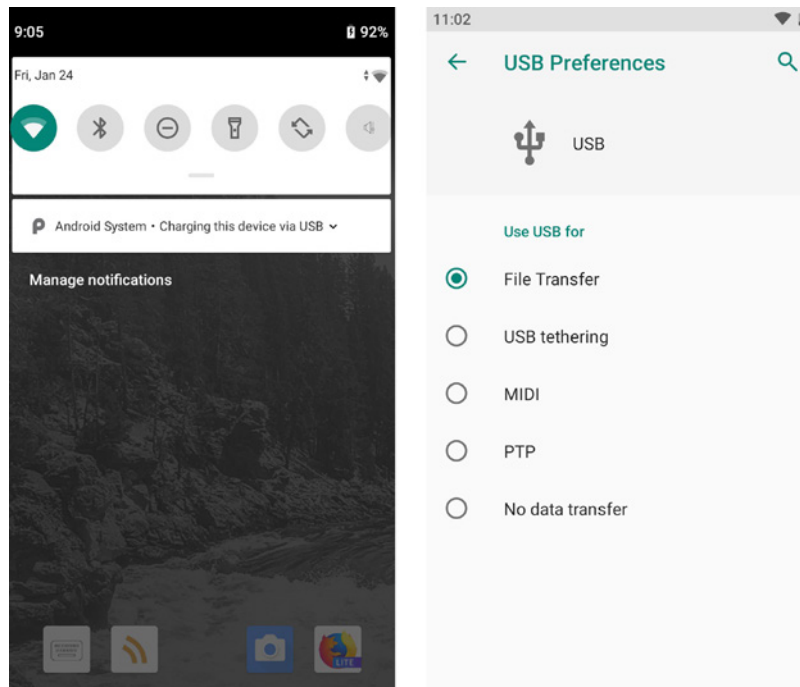
4.2. INSTALLING 3RD PARTY APPLICATIONS



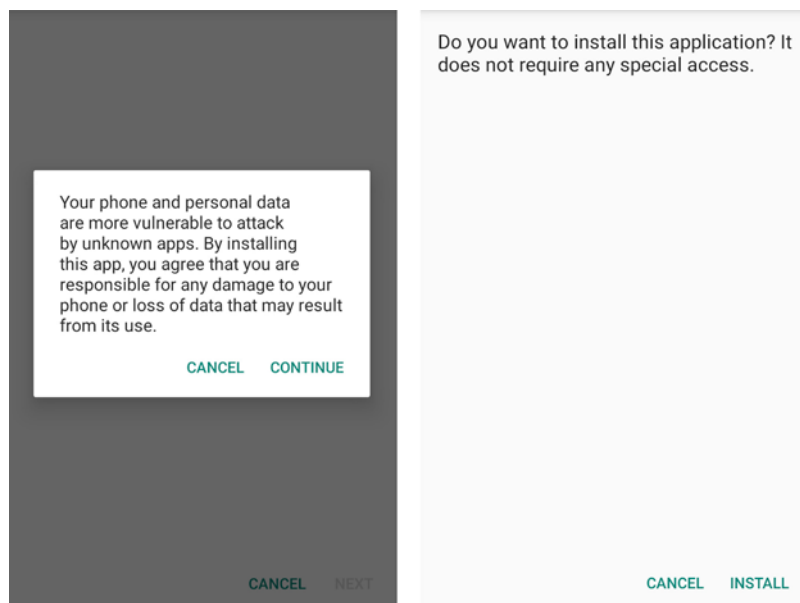
A 3rd party Android app can be installed in the Brady HH83/HH85 device, just by copying the APK installation file to the device and launching it using the Files app.

In order to copy a file to the Brady HH83/HH85 device, please follow these instructions:

1. Connect the Brady HH83/HH85 to your computer using a USB cable
2. “Tap for more options” in the drop-down USB notification, and then select “File Transfer”



3. You will now be warned about unknown apps, potential attacks and app permissions requests. Please make sure that you are installing a safe and known app before accepting both prompts.



4.3. LOCKING THE USER INTERFACE

Also known as “kiosk mode”, this feature is useful to prevent the user to modify certain settings and install/uninstall applications in Brady HH83/HH85.

When the user interface is locked, the user cannot:

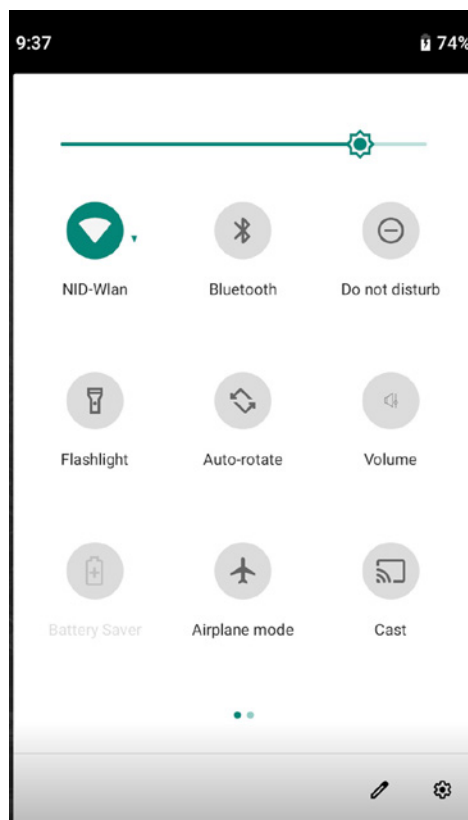
- Install additional applications.
- Uninstall existing applications.
- Add or remove app icons from the home screen.
- Access settings not available in the quick settings dropdown menu.
- Open the applications drawer.
- Update the OS.

The locking is secured using a PIN code, which is decided by the administrator of the device.

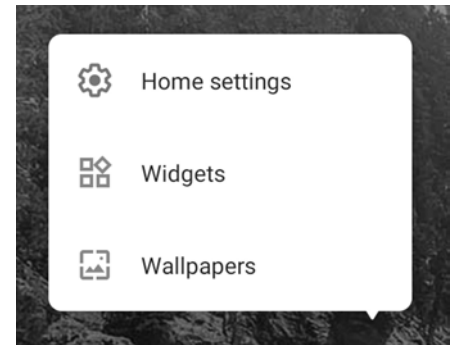
4.3.1. CREATE THE DESIRED USER INTERFACE

The first step before locking the user interface is creating the interface which the user will interact with, as any application or setting not included now will not be accessible to the user after locking UI. Please remember that you can have more than one screen and that locking the UI will lock all of them.

1. Install all the applications which the user should have access to, and create shortcut icons on the home screen for all of them.
2. Edit the Quick Settings Dropdown menu, if the user will be allowed to enable, disable or modify the configuration of each one of those settings, e.g., Wi-Fi, Bluetooth, Battery profile,... You can edit the menu by tapping the pencil in the bottom right corner.

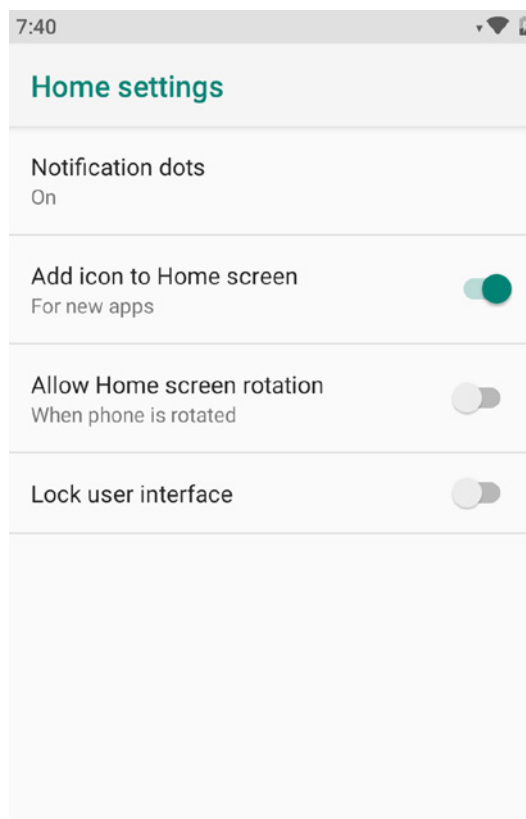
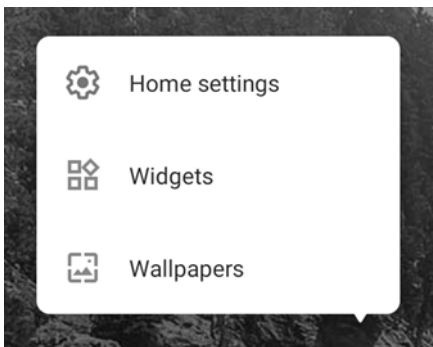


3. Select the wallpaper and add any widget which should be visible the home screen. You can configure this by long tapping the home screen background and selection the appropriate option in the pop up menu.
4. If any specific Setting has to be accessible to the user, “Settings shortcut” widgets can also be added, providing a direct access to certain settings such as Battery, Display, Hotspot, Updates, Wi-Fi, Connected devices and many others.



4.3.2. HOW TO LOCK/UNLOCK UI

Once the user interface has been created, it can be locked by long tapping the background and selecting “Lock user interface” in “Home settings”.



You will be prompted to create a PIN code which will be used to unlock the UI in case it is needed.

The process to unlock the user interface is the same: long tapping the background and unchecking the “Lock user interface” option.

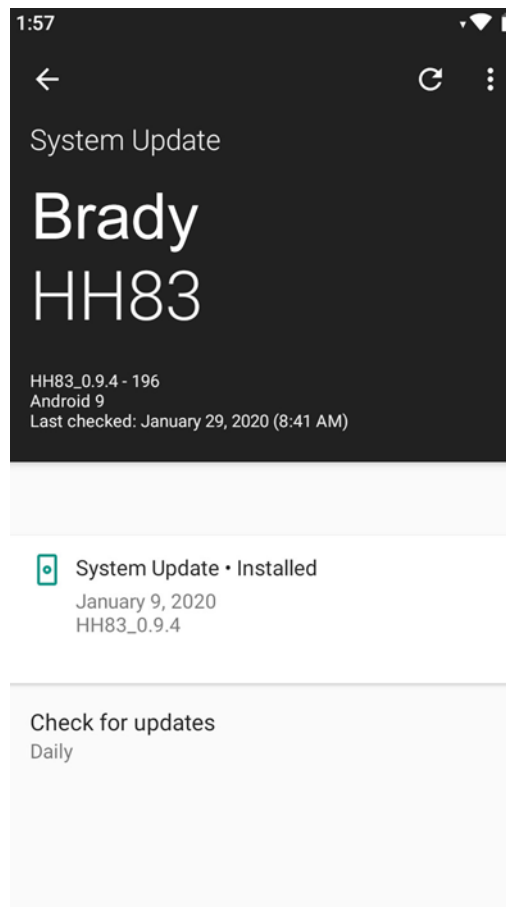
After the first locking, the device will remember the previous used PIN code and entering it again is not required, unless you want to change it.

4.4. UPDATE INSTRUCTIONS

Android OS and Brady HH83/HH85 drivers/firmware can be updated by following these steps:

1. Connect to the Internet using WLAN, LTE or the desktop cradle with Ethernet adapter.
2. Open Settings menu (Android menu, not Brady RFID Demo settings).
3. Select "System" à "Advanced" and tap "Additional system updates"
4. Then tap the circular refresh arrow on top right to check for an available update and download it from the Internet.

Instead of manual checking, you can also enable an automatic update checking every day, week, 2 weeks or month.



4.5. BACKUP AND RESTORE CONFIGURATION

The settings in the Brady HH83/HH85 can be exported to a file, which can later be imported in the same or another Brady HH83/HH85 unit to apply the same settings. This enables an easy mass configuration and roll out of Brady HH83/HH85 devices.

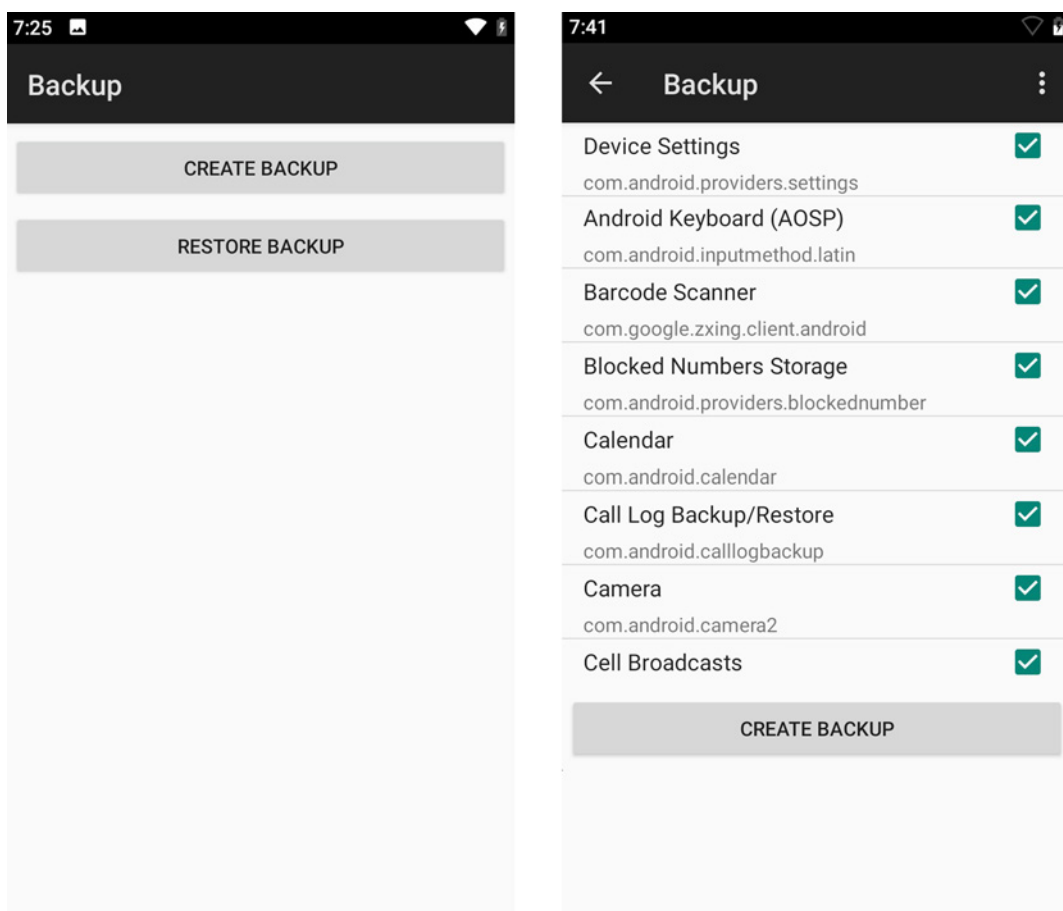
4.5.1. CREATE BACKUP

In order to create a configuration backup, please go to

Settings → System (Advanced) → Backup → Create Backup

These settings include e.,g. home screen shortcuts and widgets, WLAN configuration, apps settings

NOTE! The backup does not include any installed app or files.



4.5.2. MANUALLY RESTORE BACKUP

To restore a configuration backup, please go to

Settings → System (Advanced) → Backup → Restore Backup

and select the backup file to restore.

4.5.3. AUTOMATICALLY RESTORE BACKUP WITH USB DRIVE

The configuration can also be restored without using the Android user interface, just using a USB flash drive. If the backup file is renamed to “auto_restore_backup” and saved in the root folder of a USB flash drive, the restore process will start automatically when the USB drive is plugged to a (powered on) Brady HH83/HH85 device.

4.5.4. AUTOMATICALLY RESTORE BACKUP WITHOUT USB DRIVE

In Brady HH83/HH85 devices which have never used the backup/restore option, the “auto_restore_backup” backup file can be saved in the Downloads folder, and the restore process will start automatically when the device boots.

4.5.5. SOFTWARE TRIGGERED RESTORE BACKUP

Any custom software can start the restore process by sending the ACTION_MEDIA_SCANNER_SCAN_FILE action to the configuration backup file.

This enables control to software developers to restore the settings on request and even to select which settings to restore, provided that several configuration backup files have been created.

4.6. FACTORY RESET

4.6.1. USING ANDROID MENU

To reset the device to factory settings, please go to

Settings → System → Advanced → Reset options → Erase all data

NOTE! This will return the device to the factory status, i.e., you will lose the configuration, installed apps and files on the device.

NOTE! This will return the device to the factory status, i.e., you will lose the configuration, installed apps and files on the device.

4.6.2. WITHOUT USING THE TOUCH SCREEN

If the touchscreen of the device is not responding or the Android OS is stalled, you can also use the physical keys of Brady HH83/HH85 to reset the device:

1. Enter fastboot mode by booting the device while pressing the right-side key down.
2. Select “Recovery mode” using the side keys.
3. Press power key to confirm the selection and the device will reboot to “No command” state.
4. Press power key a few seconds and release it to enter the Android Recovery menu.
5. Select “Wipe data/factory reset” using the side keys.
6. Press power key to confirm.

4.7. ENTERPRISE MOBILITY MANAGEMENT (EMM)

The Brady HH83/HH85 supports the Android Enterprise Management framework, which enables using EMM (Enterprise Mobility Management) and MDM (Mobile Device Management) solutions.

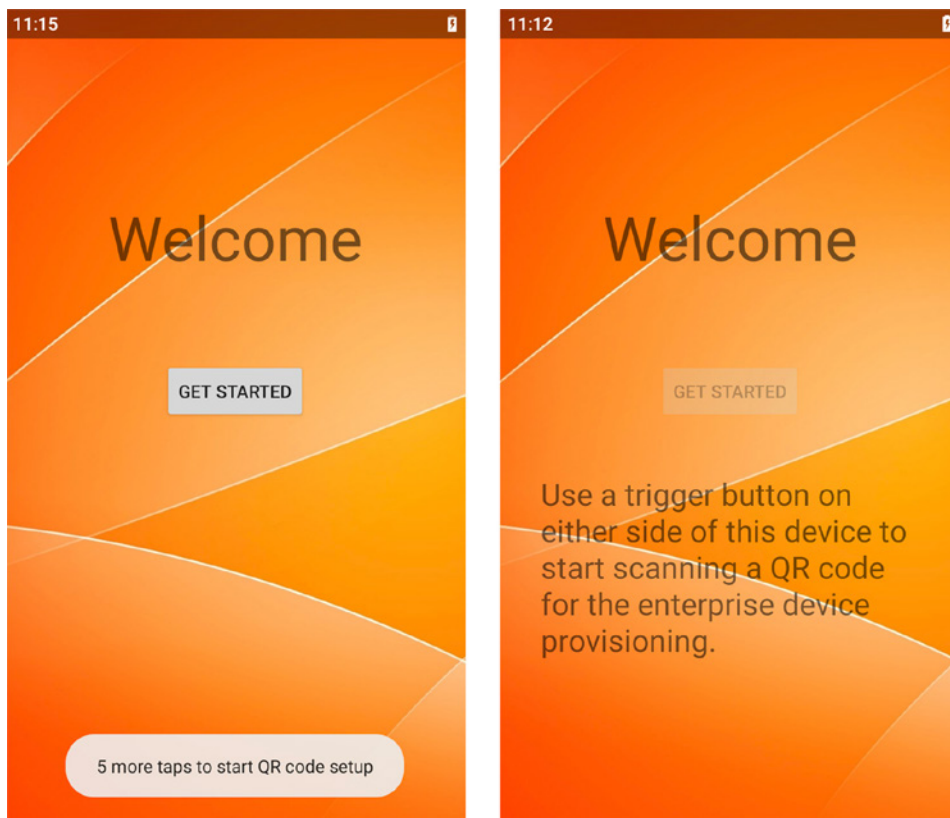
These solutions provide an administrator (a person or a company) with remote management features such as device monitoring, device reporting, remote data wiping, mobile application management or access management. In a company-owned deployment scenario, the enterprise owns and fully controls the devices its employees or customers use.

The first step to enroll a Brady HH83/HH85 on an EMM platform is to provision the device, which is a standard procedure in every Android device. You must provision the device owner mode of operation during the initial setup of a new device or after a factory reset. Device owner mode can't be provisioned on a device at any other time.

The provisioning process binds a device to an enterprise and sets a device up for management.

Before enrolling a device, the administrator creates an enrollment QR code with a management console or similar application in the EMM platform, using “Work Managed Device” or “Device Owner” management mode. This QR code contains an enrollment token and all the information that is needed for Android Device Policy to provision a device.

On a new or factory-reset Brady HH83/HH85 device, the user (typically an IT admin) taps the screen six times in the same spot. This triggers the device to prompt the user to scan a QR code.

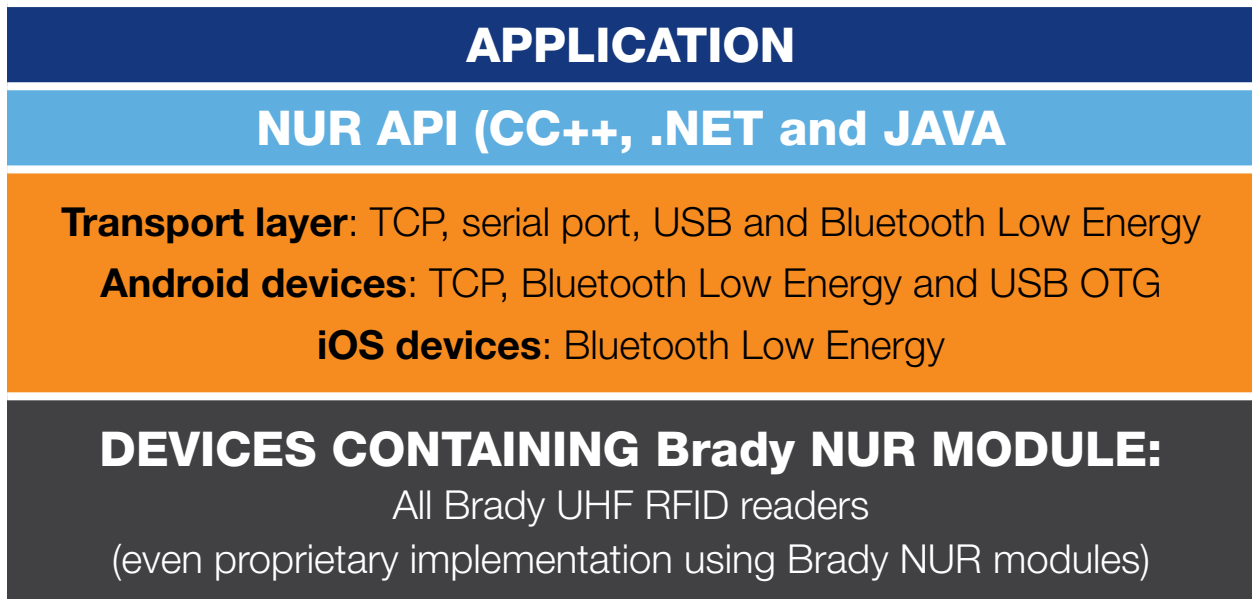


1. The user scans the QR code using the barcode scanner (imager).
2. The EMM app will be copied into the managed profile in Brady HH83/HH85 and the user will be able to use it to enroll the device.

4.8. APPLICATION DEVELOPMENT

4.8.1. NUR API IN GENERAL

NUR API is an application programming interface for Brady UHF RFID module. It provides control for all Brady UHF RFID readers. The NUR API provides compatibility between Brady UHF RFID reader from RFID functions perspective. The NUR API consists of application, NUR API, transport and HW layers as depicted here:



4.8.2. APPLICATION DEVELOPMENT

Brady provides Software Development Kits (SDK) and code samples via GitHub. More information including source code and samples can be found from GitHub via following link:



Android

https://github.com/NordicID/nur_nurapi_android

https://github.com/NordicID/nur_nurapi_android

https://github.com/NordicID/nur_tools_rfiddemo_android

5. REGIONAL SETTINGS

Brady UHF RFID readers do support operating frequency range between 860 - 960MHz. Some of the readers do cover full operating frequency band and some of them have two sub bands that are 868 ETSI band (865.6 - 867.6 MHz) and 915 FCC band (902 - 928 MHz). Regional organizations as ETSI and FCC have set rules and requirements for operating frequencies, output power and other RF parameters for the UHF RFID readers to comply local regional requirements.

Brady has created set of regional settings in order to fulfill local regulations. Brady is required to ensure compliance of Brady products will remain after production. Solution for this is products including UHF RFID functionality will be set and locked in production based on customer order e.g. if a product is ordered to Europe, it will be locked to ETSI region. And for example, if a product is ordered to Australia region, then it's locked to Australia region. When a product is locked to individual region, it will comply local regulations of the region.

6. COMPLIANCE STATEMENTS

6.1. CE

Hereby, Brady Oyj declares that this device is in compliance with the essential requirements and other relevant provisions of:

- RED: 2014/53/EU
- EMC: 2014/30/EU
- LVD: 2014/35/EU
- RoHS: 2011/65/EU

6.2. FCC/IC

The Brady HH83 RFID ACD device complies with Part 15 of the FCC Rules. Operation is subject to the following two conditions:

- (1) This device may not cause harmful interference, and
- (2) This device must accept any interference received, including interference that may cause undesired operation.

WARNING: Changes or modifications not expressly approved by the party responsible for compliance could void the user's authority to operate the equipment.

The Brady HH83 RFID ACD device contains licence-exempt transmitter(s)/receiver(s) that comply with Innovation, Science and Economic Development Canada's licence-exempt RSS(s). Operation is subject to the following two conditions:

- (1) This device may not cause interference.
- (2) This device must accept any interference, including interference that may cause undesired operation of the device.

L'émetteur/récepteur exempt de licence contenu dans le présent appareil est conforme aux CNR d'Innovation, Sciences et Développement économique Canada applicables aux appareils radio exempts de licence. L'exploitation est autorisée aux deux conditions suivantes:

- 1) L'appareil ne doit pas produire de brouillage;
- 2) L'appareil doit accepter tout brouillage radioélectrique subi, même si le brouillage est susceptible d'en compromettre le fonctionnement.

6.3. RF EXPOSURE

This equipment complies with EU, FCC and IC's RF radiation exposure limits set forth for an uncontrolled environment under the following conditions:

The Brady HH83 RFID ACD device should be installed and operated such that a minimum separation distance of 20mm is maintained between the antenna and user's/nearby person's body at all times.

Brady HH83 RFID ACD doit être installé et utilisé de manière à ce qu'une distance de séparation minimale de 20 mm soit maintenue à tout moment entre l'antenne et le corps de l'utilisateur / de la personne proche.

7. SERVICE AND SUPPORT

For technical enquiries regarding Brady devices or software development, please contact our Technical Support:

Telephone: +44 333 333 1111
E-mail: tseurope@bradycorp.com

As a manufacturer, Brady stands responsible for providing repair services for its devices during and after the warranty period. Together with partners Brady serves customers globally. When your Brady device needs repair, always use only our Brady Service or our authorized service partners. We want to make sure that your Brady product serves you the best possible way, and by using our preferred service partners the quality of the service is trustworthy and the spare parts are original. This way the existing product warranty remains, and you receive a 3-month service warranty for the repaired devices.

Brady works together with full support and primary support partners. Full support partners can handle both warranty and non-warranty repairs on behalf of Brady in their own regions. In addition, Brady has a network of smaller repair centres, primary support partners, who offer the first line of support to their customers locally.

For any enquiries about Brady repair service please contact:

Telephone: +44 333 333 1111
E-mail: tseurope@bradycorp.com

8. BRADY WARRANTY

Our products are sold with the understanding that the buyer will test them in actual use and determine for themselves the adaptability to their intended uses. Brady warrants to the buyer that its products are free from defects in material and workmanship, but limits its obligation under this warranty to replacement of the product shown to Brady's satisfaction to have been defective at the time Brady sold it. This warranty does not extend to any persons obtaining the product from the buyer.

THIS WARRANTY IS IN LIEU OF ANY OTHER WARRANTY, EXPRESS OR IMPLIED, INCLUDING, BUT NOT LIMITED TO, ANY IMPLIED WARRANTY OF MERCHANTABILITY OR FITNESS FOR A PARTICULAR PURPOSE, AND OF ANY OTHER OBLIGATIONS OR LIABILITY ON BRADY'S PART. UNDER NO CIRCUMSTANCES WILL BRADY BE LIABLE FOR ANY LOSS, DAMAGE, EXPENSE OR CONSEQUENTIAL DAMAGES OF ANY KIND ARISING IN CONNECTION WITH THE USE, OR INABILITY TO USE, BRADY'S PRODUCTS.

9. RELATED DOCUMENTS AND CONTENT

- Brady HH83 datasheet
- Brady HH83 Quick Guide
- Brady Safety and Regulations Guide
- Brady GitHub account for developers (<https://github.com/Brady>)

10. VERSION HISTORY

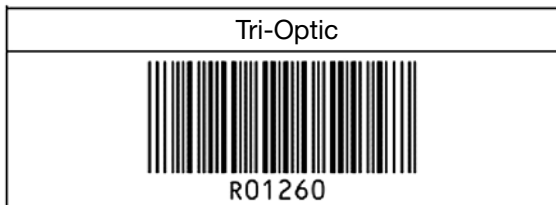
| Version | Date | Modifications |
|---------|------------|---|
| 1.0 | 22.08.2019 | The first version |
| 1.1 | 31.01.2020 | Added Android screenshots, desktop charger description, ToF sensor, volume, backup option, new pictures |
| 1.2 | 30.04.2020 | Lock User Interface, pictures of accessories, compliance statements |
| 1.3 | 18.05.2020 | Brady HH85, new backup restore modes, EMM support, Brady App Center |
| 1.4 | 20.04.2021 | Factory reset, Asian variants, more details on EMM and App Center |

12. APPENDICES

12.1. APPENDIX 1 SAMPLE 2D IMAGER CONFIGURATION BARCODES

NOTE! Barcode configuration codes can be read only when there is no active Bluetooth connection with the host device

Code 39



Codabar



Industrial 2 of 5 / Interleaved 2 of 5

